

F. MIGNONE

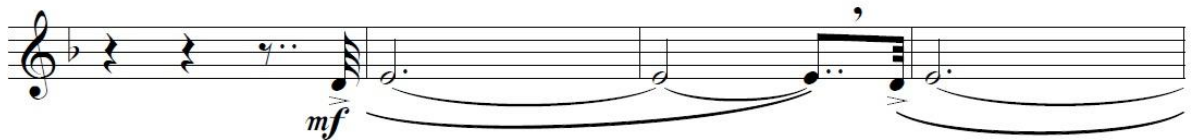
Suíte Brasileira

Parte de Clarone:

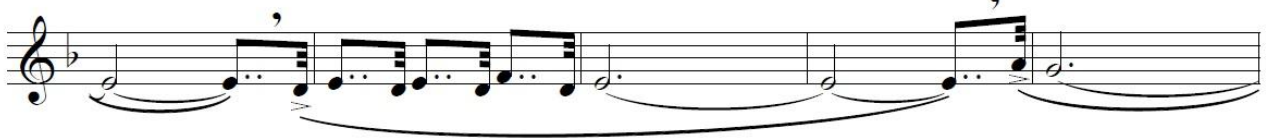
Primeiro Movimento do compasso 12 ao 41

(Andamento Moderato)

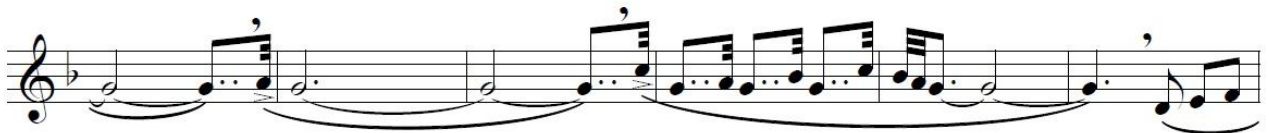
12



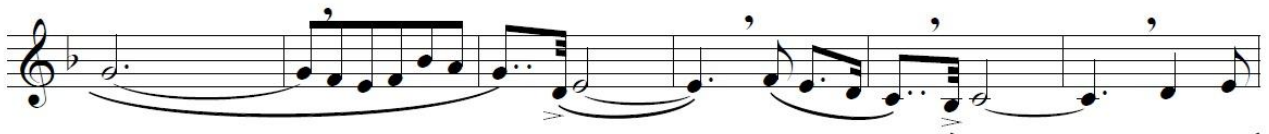
16



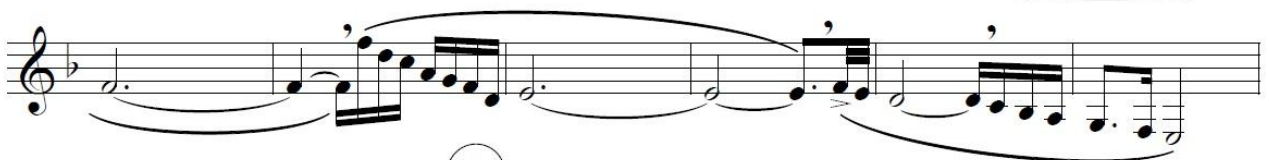
21



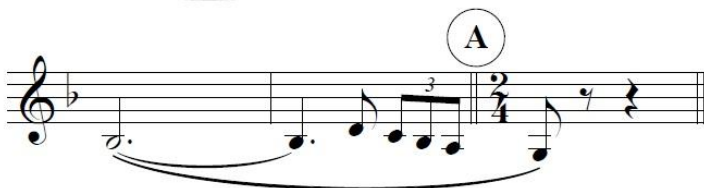
27



33



39



Terceiro Movimento do compasso 26 ao 49
(Andamento Allegretto danzante / semínima = 100)

26 8

p *f* < >

31

f < > *f* < > *p*

36

f < > *p*

42 9

ff < > *pp*

48